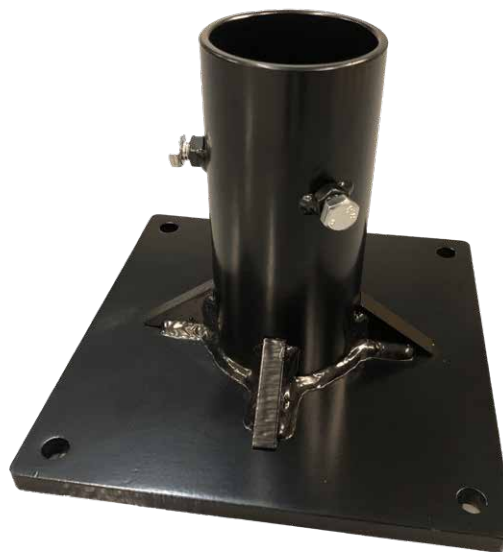




FOR 60 MM POST

The steel mounting plate is used when the post has to be installed in the ground on a concrete surface or a similar solid material.

The mounting plate has four pre-drilled holes. When combined with a 60 mm post and a bracket, it allows a charging station to be installed on the ground. The 60 mm post (accessory) is fastened to the mounting plate with three bolts which are supplied.



TECHNICAL DATA

ARTICLE NUMBER	820-00101
MATERIAL	Steel
ENCLOSURE COLOR	Black
DIMENSIONS (L X W X H)	200 x 170 x 200 mm
WEIGHT	4.1 kg
STANDARD	For 60 mm post